

Female Reproductive System

Dr. Nidhi Gupta

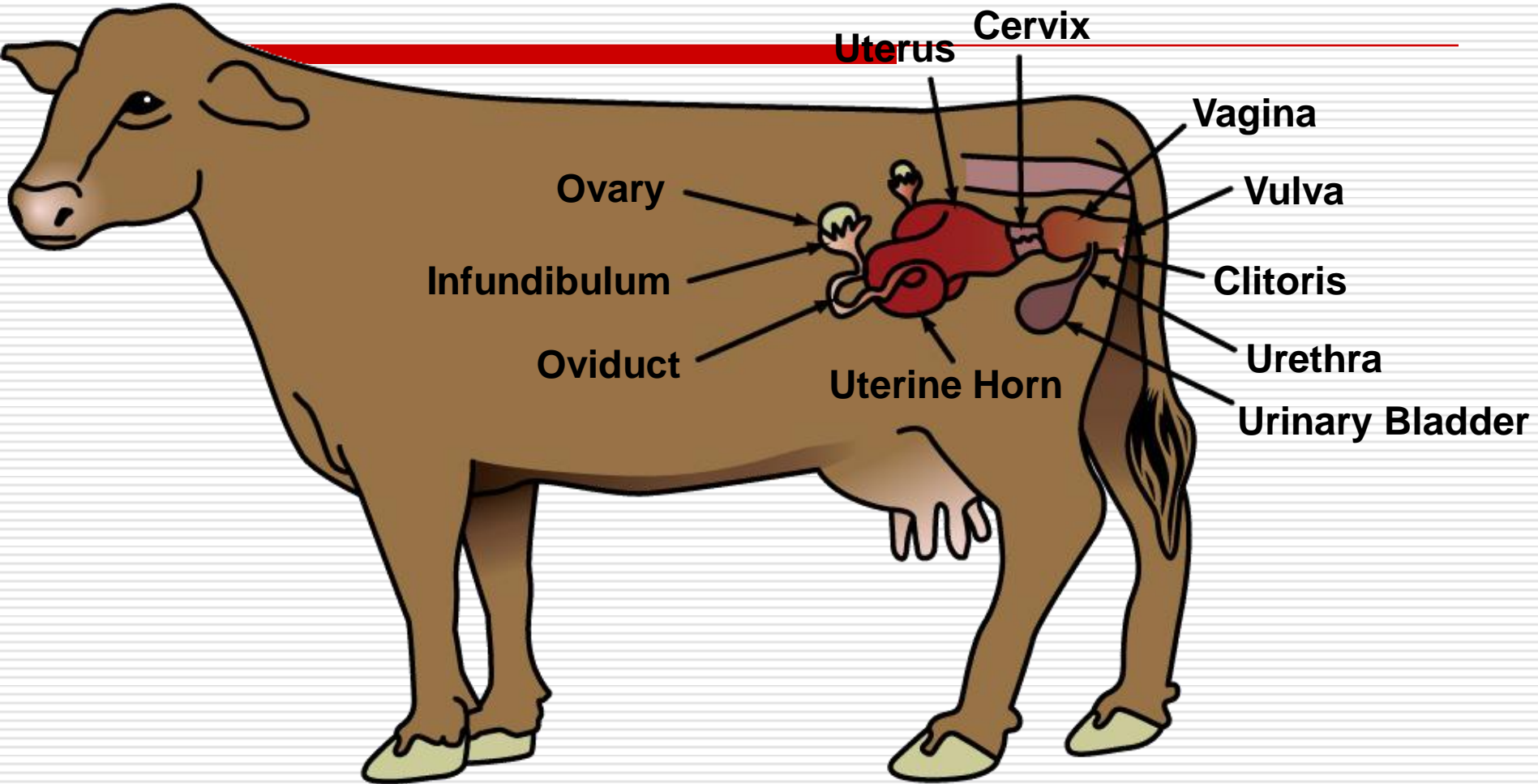
Assistant Professor

Department of Veterinary Anatomy

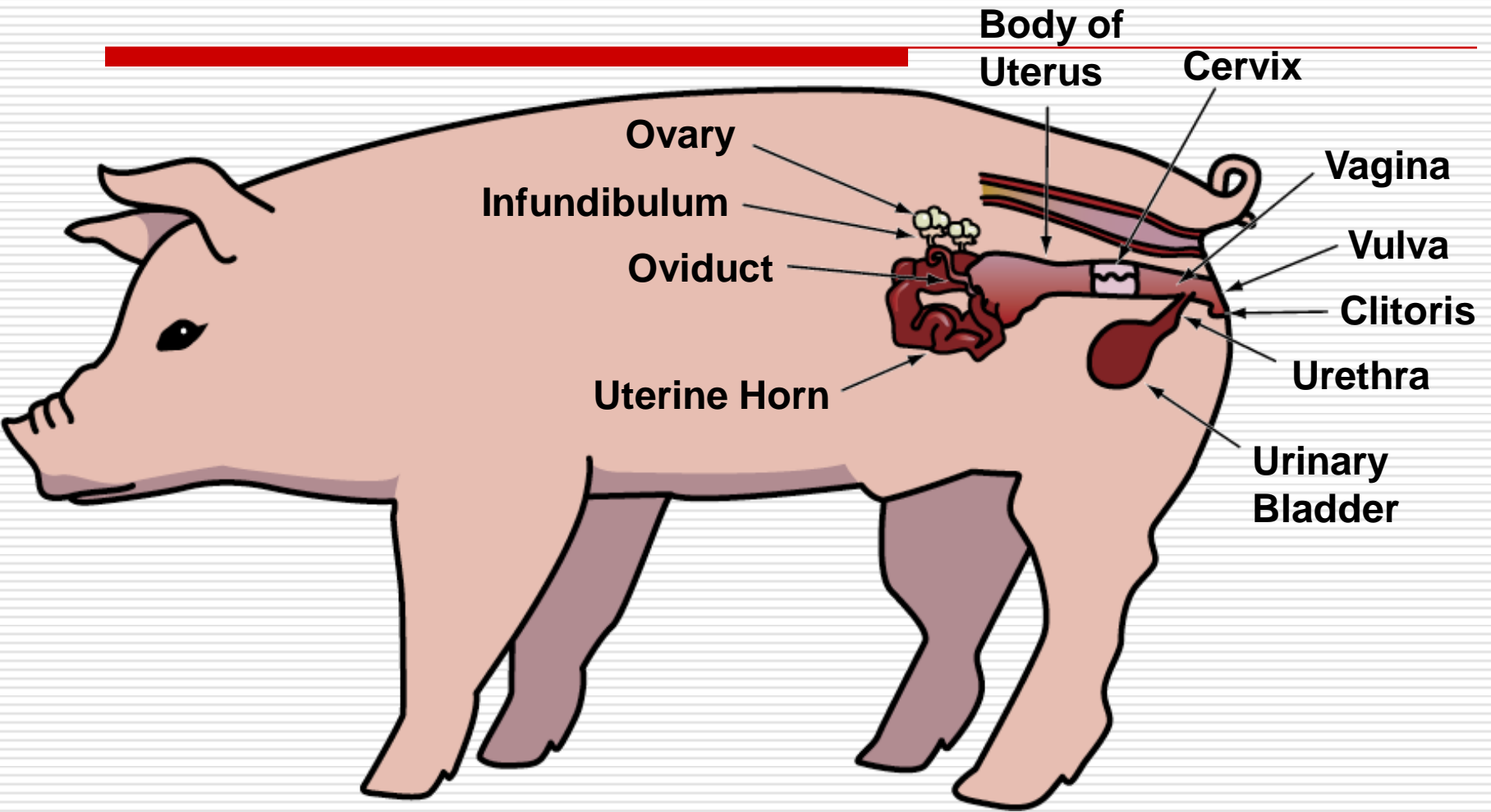
College of Vety. Sci. & A.H.

NDVSU, JABALPUR

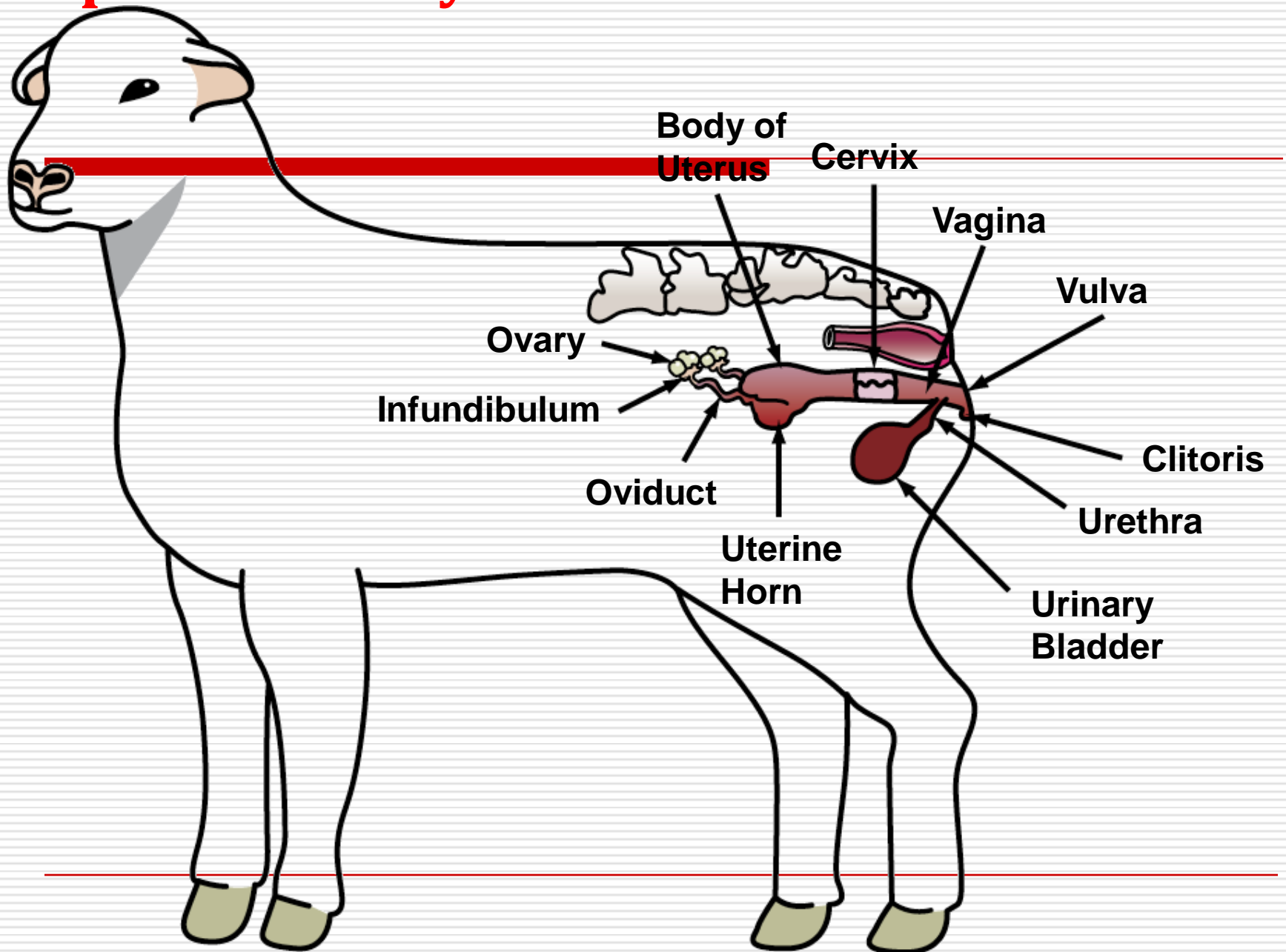
Reproductive System of the Cow - Side View



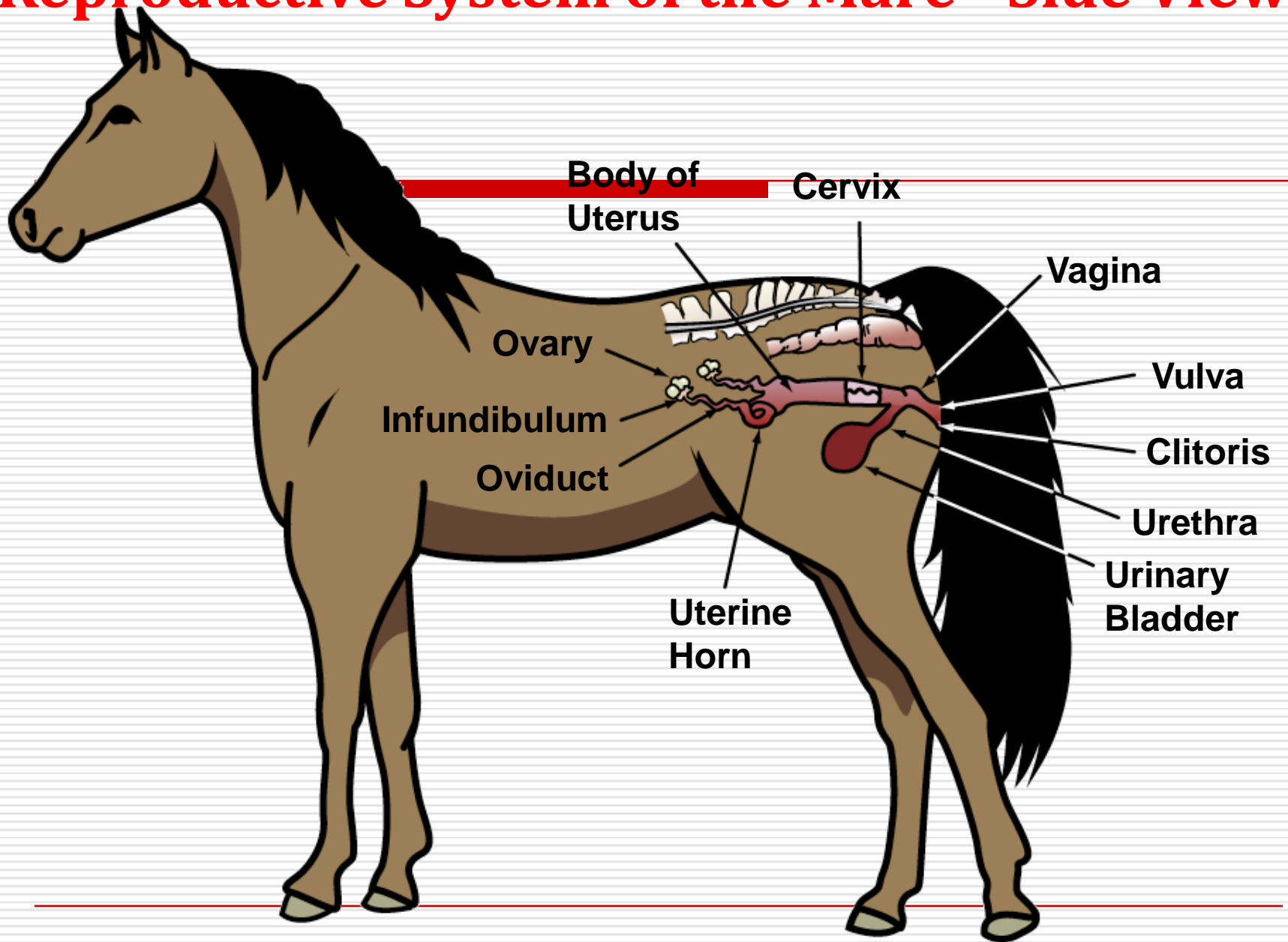
Reproductive System of the Sow - Side View



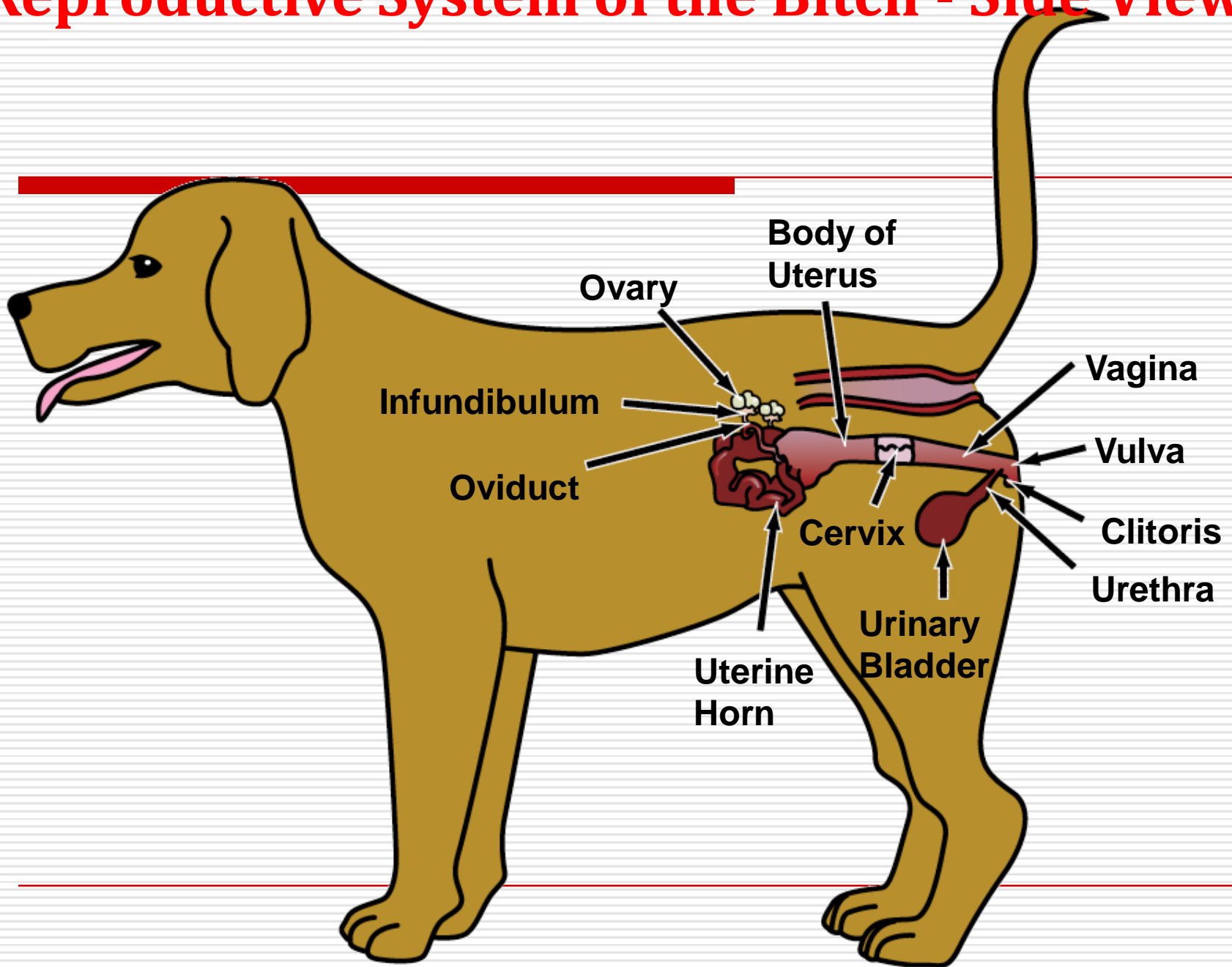
Reproductive System of the Ewe - Side View



Reproductive System of the Mare - Side View



Reproductive System of the Bitch - Side View



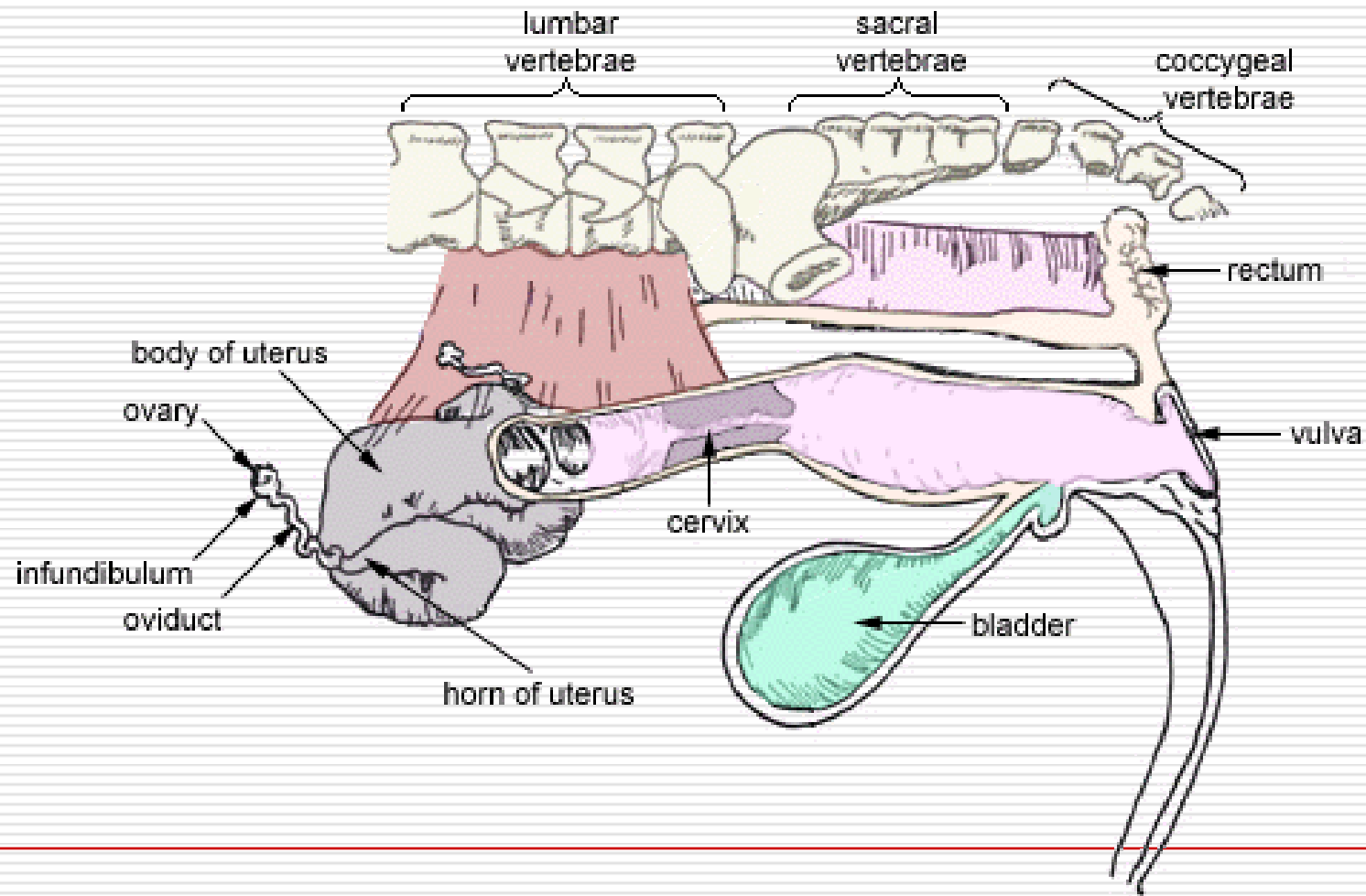
For the most part they have the same reproductive parts....

- ❑ Ovary – produces eggs & hormones**
 - ❑ Infundibulum – catches eggs after burst from ovary**
 - ❑ Oviduct (Fallopian Tube) – narrow passage for egg, site of fertilization**
 - ❑ Uterine Horn – For litter bearing animals to develop**
 - ❑ Uterus – development of fetus**
-

Female Reproductive Parts.... Cont....

- ❑ Cervix – muscle which locks down uterus**
 - ❑ Vagina – site of copulation (semen deposited) in most animals**
 - ❑ Clitoris – stimulates reproductive tract causing waves during mating**
 - ❑ Vulva – external opening of vagina**
 - ❑ Urethra – carries urine**
-

Cow's Reproductive Tract



Anatomy of Uterus

- ☐ It is a thick walled hollow muscular organ.
 - ☐ It is situated almost in the abdominal cavity & partly in the pelvic cavity between bladder below & the colon and rectum above.
 - ☐ It continuous cranially with the oviduct and caudally with the vagina .
 - ☐ The organ is attached to the sub-lumbar region and to the lateral wall of pelvic and abdominal cavity by the broad ligament .
 - ☐ The broad ligament is formed by double fold of peritoneum with some connective tissue and muscle fibers.
-

Horns of uterus

☐ Uterus present 2 horns

1-Right horn

2-Left horn

☐ Each horn is a spiral muscular tube tapered cranially to join the oviduct.

☐ The length of uterine horn is about **35 to 40 cm.**

☐ The diameter of uterine horn is not uniform. it increased towards body.

Horns of uterus

cont.

-
- Anterior extremity of horn is tapering
 - Posteriorly it converge with the wall of opposite horn & covered by fibro muscular sheath & at this part the two horn share common peritoneum **hence they appear shorter than their actual length.**
 - Its **inferior or lower curvature** is concave.
 - Its **superior curvature** is convex.
 - The horn are directed forward, downward, outward, backward and finally upward.
 - They are spiral & resemble to the **horn of Ram.**
-

Body and cervix of uterus

- Body is very short & narrow. 4 to 5 cm (actual length) However it appear externally 10 to 15 cm.
- It appear longer than really, due to the presence of common peritoneal covering on the caudal most part of the horn before their union.
- This is dorsoventrally flat tube & is laterally attached with the broad ligament.
- The wall is thicker than horns.
- The body bifurcates cranially to form horn & caudally continuous with the cervix. It is last part of uterus.
- It is 8 cm long.

Body and cervix of uterus cont.

- **It is a short tube which has numerous folds in non pregnant animal.**
- **It continuous anteriorly with the body and posterioly it project in to the vagina.**
- **The tip of the projected part presents a depression, k/w as **external os** , through which the cervical canal communicate with the vagina.**

Note:

In pregnancy , caruncles size may be up to 10-12 cm long, 6 cm wide & they supply blood to foetus through placenta.

External Genitalia of the Cow



Anus

Labia

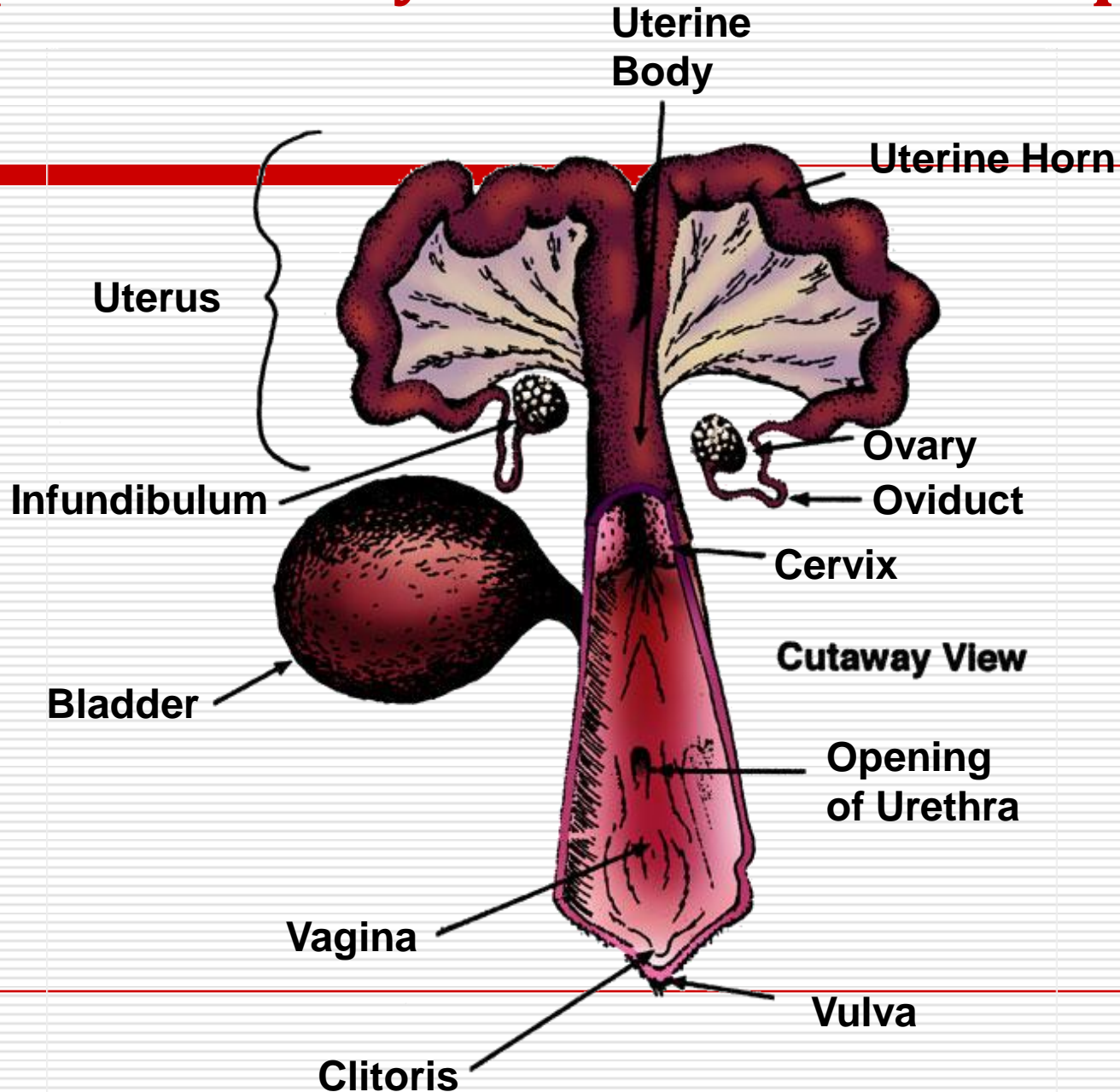
Clitoris

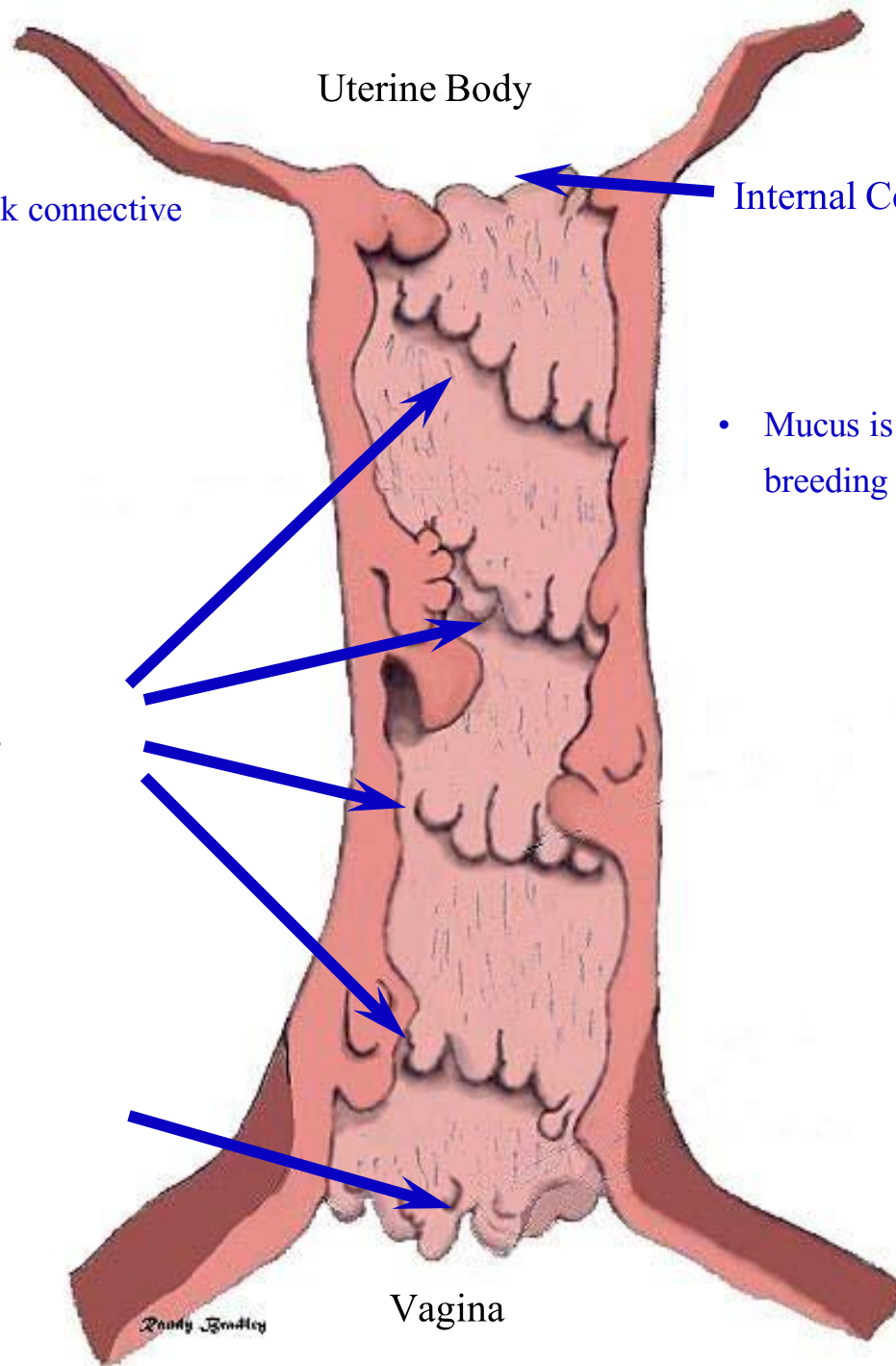
Labia

Vulva



Reproductive System of the Sow - Top View





- Cervix is composed of thick connective tissue

Internal Cervical Os

- Mucus is secreted near the time of breeding and ovulation.

Cervix

Cow has 4-5 annular rings

External Cervical Os

Vagina

Mare

Uterine Body

No obstacles

Longitudinal Folds

Interdigitating pads

Fornix Vagina

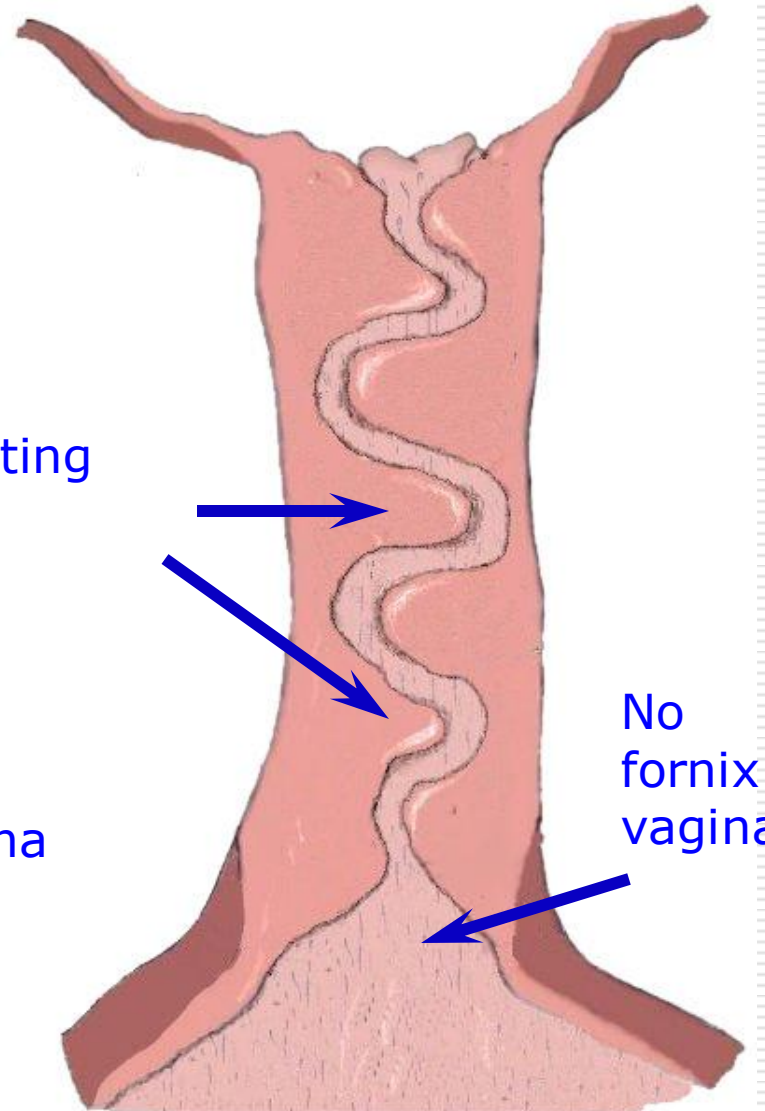
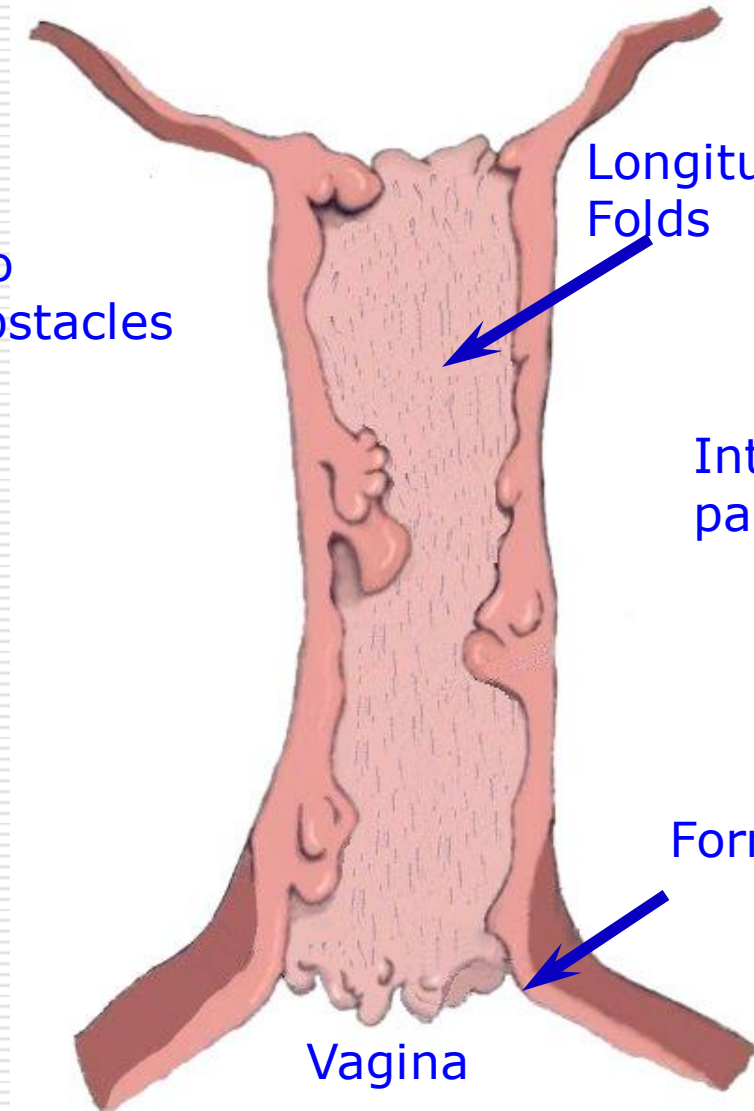
Vagina

Sow

Uterine Body

No fornix vagina

Vagina



Thanks
